

International Conference on Interdisciplinary research in Artificial
Intelligence & Machine Learning
(ICIRAIML -2025)



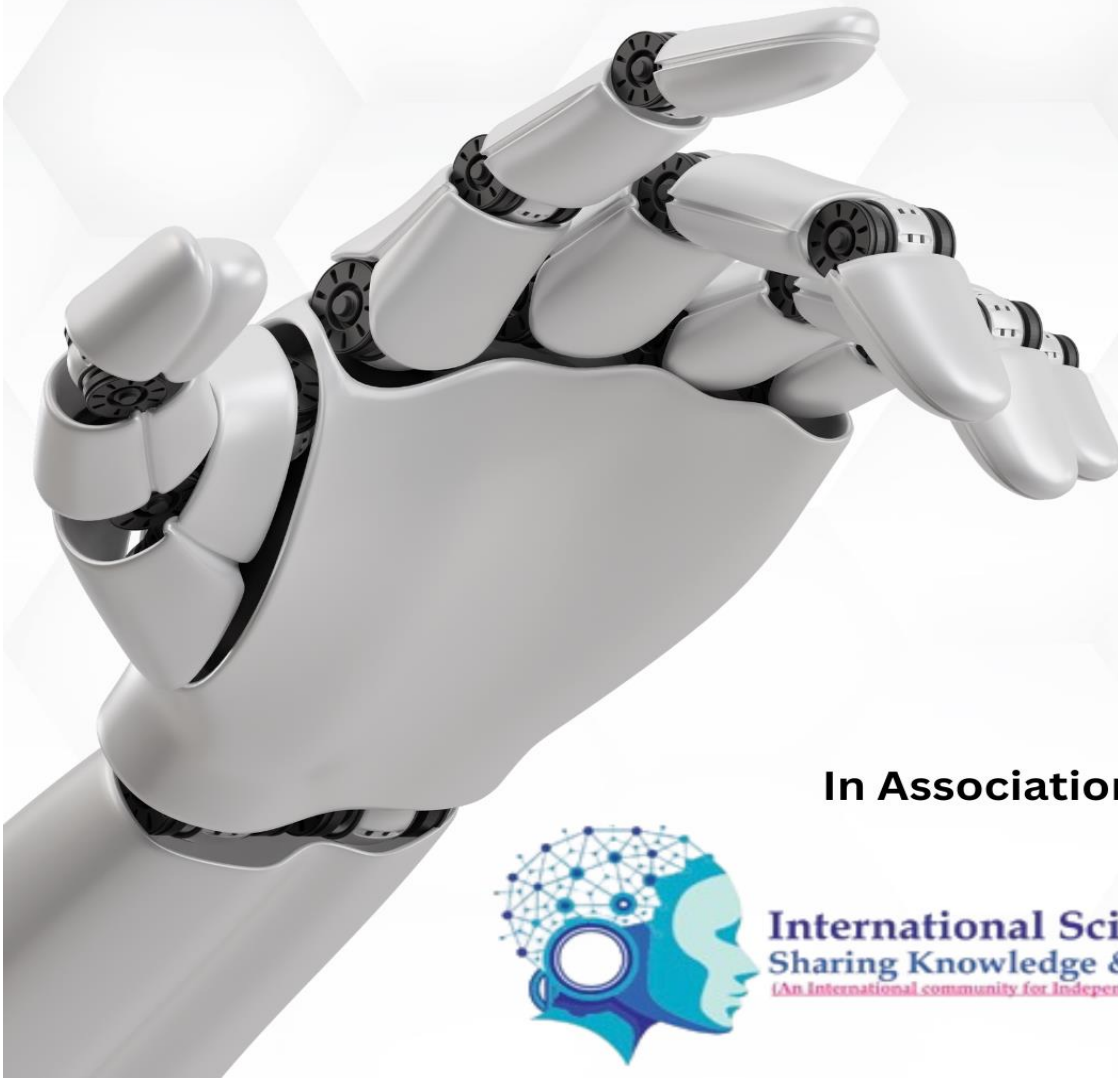
ESP Journal of Engineering & Technology Advancements
International Journal, Scholarly Peer-Reviewed and Published Globally

Organized by :

ICIRAIML -2025

ISSN : 2583-2646

**“Smart Solutions Through
Collaboration”**



In Association With:



International Scientific Society
Sharing Knowledge & Wisdom
(An International community for Independent & academic Research Scholars)

International Conference on Interdisciplinary research in
Artificial Intelligence & Machine Learning
(ICIRAIML 2025)

Proceedings of

ICIRAIML 2025

12th February 2025

Organized by



ESP Journal of Engineering & Technology Advancements
International Journal, Scholarly Peer-Reviewed and Published Globally

ESP Journal of Engineering & Technology Advancements

In Association With



International Scientific Society
Sharing Knowledge & Wisdom
(An International community for Independent & academic Research Scholars)

VVS Arcade, 18/1, Puthur High Road,

Opposite to Aruna Theater,

Tiruchirappalli - 620017

About the Conference

The International Conference on Interdisciplinary Research in Artificial Intelligence & Machine Learning (ICIRAIML 2025) is an emerging global academic platform designed to bring together researchers, academicians, scientists, industry professionals, and students to discuss recent innovations and developments in the fields of Artificial Intelligence (AI) and Machine Learning (ML). The conference mainly focuses on interdisciplinary research where AI and ML technologies are integrated with various domains such as healthcare, education, robotics, environmental science, economics, cybersecurity, data analytics, and smart technologies. The conference provides an opportunity for participants from different disciplines to exchange knowledge, present innovative ideas, and promote collaborative research activities.

ICIRAIML 2025 aims to create a strong research environment that encourages the practical application of AI and ML technologies for solving real-world challenges. The conference highlights the importance of interdisciplinary collaboration in developing intelligent systems capable of improving efficiency, automation, decision-making, and sustainability across multiple sectors. Researchers and experts participating in the conference can present their research papers, technical innovations, case studies, and experimental findings related to emerging AI technologies and machine learning models.

One of the major objectives of the conference is to explore advanced research areas such as deep learning, reinforcement learning, explainable AI, cognitive computing, natural language processing, robotics, Internet of Things (IoT), augmented reality, virtual reality, and intelligent automation systems. The conference also encourages discussions on ethical AI practices, transparency, fairness, accountability, and the social impact of artificial intelligence technologies. These discussions help researchers understand the importance of responsible AI development for future digital ecosystems.

The conference covers a wide range of themes and research domains. In healthcare, AI technologies are explored for disease prediction, medical imaging, patient monitoring, and personalized treatment systems. In education, machine learning and intelligent tutoring systems are used to create adaptive and personalized learning environments. Environmental sustainability is another important focus area where AI is applied in climate monitoring, renewable energy optimization, and smart environmental management systems. The conference also emphasizes AI applications in robotics and industrial automation for manufacturing, logistics, and autonomous systems.

ICIRAIML 2025 serves as a valuable networking platform where participants can interact with international researchers, technical experts, innovators, and academic professionals. Through keynote speeches, technical sessions, workshops, and paper presentations, attendees gain exposure to current technological advancements and future research opportunities. The conference encourages young researchers and students to contribute innovative ideas and engage in interdisciplinary problem-solving approaches using AI and ML technologies.

Another important aspect of the conference is its focus on future smart technologies and intelligent digital transformation. AI-driven applications in smart cities, cybersecurity, big data analytics, cloud computing, communication systems, and intelligent transportation are actively discussed during the event. These topics help researchers identify future technological trends and practical implementations of AI in modern society. The conference also promotes collaborative research between academia and industry to accelerate innovation and technological development.

Overall, ICIRAIML 2025 plays an important role in promoting interdisciplinary research and innovation in Artificial Intelligence and Machine Learning. The conference provides an excellent academic and professional platform for sharing research knowledge, discussing emerging technologies, and encouraging responsible AI development for solving global challenges. It supports the growth of future intelligent systems and contributes to the advancement of AI-driven digital transformation across various industries and research domains.

Key Note Speaker

Mr. Shirish Mane
SAP SD/OTC Functional Consultant & Independent Researcher, USA.

Mr. Kapil Chandrakant Wannere
Senior Network Engineering Lead & Independent Researcher, USA.

Mr. Santhosh Kumar Pendyala
Senior Manager - Artificial Intelligence & Analytics, Cognizant Technology Solutions, USA.

Mr. Praveen Kumar Myakala
Vice President – JPMorgan Chase, USA.

Madhava Rao Thota
Database Administrator/Architect, USA.

Mr. Surendra Vitla
Architect & Independent Researcher, USA.

Mr. Siva Venkatesh Arcot
Solutions Manager - Customer Success - Cisco Systems Inc & Independent Researcher, USA.

Mr. Pavan Kumar Gollapudi
Quality Engineering Associate Manager, Accenture & Independent Researcher, USA.

Mr. Bhanu Raju Nida
Principal Architect, Enterprise Analytics at SAP, USA.

Mr. Mahesh Vaijainthymala Krishnamoorthy
Senior Consultant, Solutions Architect, AI/ML Governance - Stellmith LLC & Independent Researcher, USA.

Mr. Santosh Pashikanti
Chief Cloud Architect and Architecture Leader, USA.

Ms. Spriha Deshpande
Senior SW Test Developer & Independent Researcher, USA.

Mr. Kuppusamy Vellamadam Palavesam
Lead Software Engineer, Mastercard & Independent Researcher, USA.

Ravi Kumar Ireddy
Solution Architect - Cloud & AI Transformation, Tata Consultancy Services, USA.

Uttama Reddy Sanepalli
Senior Cloud & AI Engineer, Fidelity Investments, NC, USA.

Mallikarjuna Rao Vasa
Data Architecture/Data Integrations Manager, Deloitte, Dallas TX, USA.

Sivaramakrishnan Narayanan
Technology Risk Specialist & Business Information Security Officer, Toyota Financial Services, USA.

Advisory Committee

Dr. Adinarayana Vannala

Professor, Department of Electronics & Communication Engg, Avanthi Institute of Engineering &Technology, Telangana, India.

Dr. N.Rajkumar

Assistant professor, Department of CSE, School of Engineering Presidency University, Bangalore, India.

Dr. Thuttagunta Manikya Sastry

Associate Professor & Head, Department of Organic chemistry, Gayatri Vidya Parishad College of Engineering, Visakhapatnam, India.

Dr. C. Vennila

Assistant Professor, Department of Electrical Engineering, Alagappa Chettiar College of Engineering & Technology, Karaikudi, India.

Dr. Madan Mohan Tito Ayyalasomayajula

Professor, Department of Metallurgy & Material Engineering, Necmettin Erbakan University, Turkey.

Conference Convener

Mr. Parthiban Mohan

Managing Editor/Director,

Eternal Scientific Publications

CONTENTS

S.No	Title/Author Name	Page No
1.	AI Agents for Autonomous Task Execution Systems <i>Dr. Harish Narayanan, Keerthika Raj</i>	1
2.	Self-Reasoning Generative AI for Smart Decision Making <i>Naveena Prakash, Arjun Dev</i>	2
3.	OmniAI Models for Unified Text, Audio and Vision Processing <i>Dr. Lavanya Menon, Rohit Anand</i>	3
4.	AI-Powered Autonomous Digital Workforce Systems <i>Dr. Vishal Kumar, Sneha Paul</i>	4
5.	Hyper-Personalized Generative AI for Human Interaction <i>Dr. Meera Suresh, Ashwin Rao</i>	5
6.	Neural AI Operating Systems for Future Smart Devices <i>Karthikeyan R, Divya Menon</i>	6
7.	AI-to-AI Communication Frameworks for Autonomous Networks <i>Dr. Priyadharshini V, Mohammed Irfan</i>	7
8.	Autonomous Generative AI for Real-Time Problem Solving <i>Sandeep Iyer, Aarthi Krishnan</i>	8
9.	Cognitive AI Memory Systems for Human-Like Intelligence <i>Arun Prakash, Daniel Joseph</i>	9
10.	Spatial Intelligence AI for Mixed Reality Applications <i>Nivetha Balan, Pooja Raman</i>	10
11.	Self-Learning AI Ecosystems for Industry 5.0 <i>Raghul Krishna, Kiran Patel</i>	11
12.	Generative World Models for Autonomous Robotics <i>Janani Vel, Harini Das</i>	12
13.	Adaptive AI Reasoning Engines for Complex Analytics <i>Venkatesh Raman, Naveen George</i>	13
14.	AI-Powered Synthetic Human Behavior Modeling <i>Bhavana Nair, Rithika Sharma</i>	14
15.	Universal Multimodal AI for Intelligent Automation <i>Sanjana Devi, Vishnu Raj</i>	15
16.	AI-Driven Digital Brain Architectures for Smart Computing <i>Abhishek Kumar, Gayathri S</i>	16
17.	Autonomous AI Collaboration Using Swarm Intelligence <i>Keerthi Mohan, Suraj Menon</i>	17

18.	Predictive AI Agents for Next-Generation Cyber Defense <i>Dr. Ashok Prabhu, Jennifer Roy</i>	18
19.	Human-Aware AI Systems for Personalized Smart Services <i>Dr. Lakshmi Narayanan, Akshay Verma</i>	19
20.	NeuroAdaptive AI Frameworks for Cognitive Computing <i>Dr. Monisha Ravi, Shreya Paul</i>	20
21.	AI-Generated Simulation Systems for Smart Research <i>Dr. Deepak Sharma, Rohan Iyer</i>	21
22.	Self-Healing Intelligent Networks Using Autonomous AI. <i>Kavin Raj, Aishwarya Menon</i>	22
23.	AI-Powered Reality Fusion Systems for Virtual Environments. <i>Shalini Verghese, Aditya Krishna</i>	23
24.	Machine Reasoning Models for Autonomous Enterprise Intelligence <i>Dr. Pradeep Narayan, Keerthana Iyer</i>	24
25.	Intelligent AI Mesh Networks for Smart Infrastructure <i>Dr:</i> <i>Hari Venkataraman, Rahul Bose</i>	25
26.	Generative AI Memory Architectures for Long-Term Learning <i>Anupama R, Nisha Kapoor</i>	26
27.	AI-Based Dynamic Knowledge Systems for Future Computing <i>Rajeshwari Devi, Siddharth Jain</i>	27
28.	Autonomous Multimodal Intelligence for Smart Ecosystems <i>Dr:</i> <i>Vinod Krishnan, Pavithra Nair</i>	28

AI Agents for Autonomous Task Execution Systems

Dr. Harish Narayanan¹, Keerthika Raj²

¹Associate Professor, Department of AI & Robotics, IIT Madras, India

¹AI Solutions Engineer, Zoho Corporation, India

Abstract: Artificial Intelligence (AI) agents are transforming modern computing systems by enabling autonomous task execution with minimal human intervention. AI agents are intelligent software entities capable of perceiving environments, making decisions, learning from experiences, and performing tasks independently. This research paper explores the development and application of AI Agents for Autonomous Task Execution Systems across various domains such as healthcare, finance, education, manufacturing, cybersecurity, and smart cities. Traditional automation systems mainly rely on predefined rules and manual supervision, whereas modern AI agents integrate machine learning, large language models, reinforcement learning, and cognitive reasoning to perform dynamic and adaptive operations.

The study focuses on the architecture, functionalities, and capabilities of autonomous AI agents in handling complex real-time tasks. AI agents can analyze large datasets, understand contextual information, generate intelligent responses, automate workflows, and optimize decision-making processes. Advanced autonomous systems are capable of collaborating with other AI agents, adapting to changing environments, and continuously improving their performance through self-learning mechanisms. The integration of AI agents with cloud computing, Internet of Things (IoT), edge computing, and multimodal AI technologies further enhances system efficiency and scalability.

This paper also highlights the importance of autonomous AI agents in reducing operational costs, increasing productivity, minimizing human errors, and enabling intelligent digital transformation. Applications such as AI-powered virtual assistants, autonomous industrial robots, predictive maintenance systems, intelligent customer support, and smart enterprise management platforms demonstrate the practical impact of autonomous task execution systems. However, challenges including data privacy, ethical concerns, transparency, security vulnerabilities, and decision accountability remain critical issues in deploying AI agents at large scale.

Future advancements in autonomous AI systems are expected to focus on trustworthy AI, human-AI collaboration, adaptive reasoning, and fully autonomous digital ecosystems. The research concludes that AI Agents for Autonomous Task Execution Systems will play a significant role in shaping next-generation intelligent technologies and transforming the future of automation and smart computing environments.

Keywords: AI Agents, Autonomous Systems, Intelligent Automation, Machine Learning, Autonomous Task Execution, Generative AI, Smart Computing, Reinforcement Learning, Digital Transformation, Cognitive AI

Self-Reasoning Generative AI For Smart Decision Making

Dr. Naveena Prakash¹, Mr. Arjun Dev²

¹Professor, Department of Computer Science, Anna University, India

²Generative AI Researcher, Infosys Labs, India

Abstract: Self-Reasoning Generative Artificial Intelligence is emerging as a powerful technology for building intelligent systems capable of autonomous thinking and smart decision-making. Unlike traditional AI models that mainly focus on pattern recognition, self-reasoning generative AI systems can analyze information, understand context, evaluate multiple possibilities, and generate logical decisions dynamically. This research paper explores the application of Self-Reasoning Generative AI for Smart Decision Making across various domains such as healthcare, finance, education, cybersecurity, industrial automation, and smart governance systems.

The study focuses on integrating advanced technologies including large language models, reinforcement learning, neural reasoning architectures, and adaptive machine learning techniques to improve intelligent decision-making capabilities. Self-reasoning AI systems can process complex datasets, identify patterns, predict future outcomes, and provide optimized recommendations in real time. These systems are capable of learning continuously from interactions and adapting their responses based on changing environments and user requirements. The combination of generative AI and reasoning models enhances automation efficiency, reduces manual intervention, and improves operational productivity.

Applications such as intelligent virtual assistants, predictive healthcare systems, autonomous enterprise analytics, smart traffic control systems, and AI-driven cybersecurity monitoring demonstrate the practical impact of self-reasoning AI technologies. The integration of cloud computing, edge AI, and Internet of Things (IoT) further improves scalability and real-time performance. In addition, self-reasoning generative AI supports faster problem-solving and more accurate business intelligence solutions.

Despite its advantages, several challenges remain in implementing self-reasoning AI systems, including transparency, ethical concerns, bias in AI models, data privacy, computational complexity, and security vulnerabilities. Developing explainable and trustworthy AI frameworks is essential for ensuring responsible deployment in critical applications. Future advancements are expected to focus on cognitive AI systems, adaptive memory architectures, human-AI collaboration, and fully autonomous reasoning platforms.

The research concludes that Self-Reasoning Generative AI for Smart Decision Making will become a foundational technology for next-generation intelligent systems and digital transformation across multiple industries.

Keywords: Self-Reasoning AI, Generative Artificial Intelligence, Smart Decision Making, Large Language Models, Cognitive Computing, Autonomous Systems, Intelligent Automation, Reinforcement Learning, Adaptive AI, Multimodal Intelligence

Omniai Models for Unified Text, Audio and Vision Processing

Dr. Lavanya Menon¹, Mr. Rohit Anand²

¹Multimodal AI Scientist, IIT Hyderabad, India

²AI Developer, TCS Research & Innovation, India

Abstract: OmniAI models are transforming the field of Artificial Intelligence by enabling unified processing of text, audio, image, and video data within a single intelligent framework. Traditional AI systems are usually designed to handle only one type of data, such as text or images, which limits their ability to understand complex real-world environments. OmniAI models overcome this limitation through multimodal intelligence, allowing machines to analyze and integrate information from multiple data sources simultaneously. This research paper explores the development and applications of OmniAI Models for Unified Text, Audio and Vision Processing in advanced digital systems.

The study focuses on how multimodal AI architectures combine natural language processing, computer vision, speech recognition, and deep learning technologies to create highly adaptive intelligent systems. OmniAI models can understand spoken language, interpret visual information, process textual content, and generate context-aware responses in real time. These systems improve human-computer interaction by enabling seamless communication across different input formats. Advanced transformer architectures, foundation models, neural attention mechanisms, and generative AI techniques play a significant role in enhancing multimodal learning and contextual understanding.

Applications of OmniAI models are rapidly expanding across various industries including healthcare, education, smart surveillance, autonomous vehicles, virtual assistants, entertainment, and smart customer service systems. In healthcare, multimodal AI can analyze medical images, patient voice data, and clinical reports simultaneously for improved diagnosis. In education, intelligent tutoring systems can combine speech, text, and visual learning materials to provide personalized learning experiences. Smart security systems also benefit from real-time analysis of video, audio, and behavioral data for advanced threat detection.

Despite its advantages, implementing OmniAI systems involves challenges such as computational complexity, large-scale data management, model bias, privacy concerns, and high infrastructure requirements. Ensuring ethical AI practices, transparency, and efficient resource optimization is essential for sustainable deployment. Future advancements are expected to focus on real-time multimodal reasoning, low-power AI architectures, adaptive learning systems, and human-like contextual intelligence.

The research concludes that OmniAI Models for Unified Text, Audio and Vision Processing will become a core technology for future intelligent systems by enabling more natural, adaptive, and efficient AI-driven interactions across digital environments.

Keywords: Omniai Models, Multimodal Artificial Intelligence, Computer Vision, Natural Language Processing, Speech Recognition, Generative AI, Deep Learning, Intelligent Systems, Human-Computer Interaction, Multimodal Learning

Ai-Powered Autonomous Digital Workforce Systems

Dr. Vishal Kumar¹, Ms. Sneha Paul²

¹Intelligent Systems Researcher, VIT Chennai, India

²Automation Consultant, Wipro Technologies, India

Abstract: AI-Powered Autonomous Digital Workforce Systems are revolutionizing modern organizations by enabling intelligent automation of complex business operations with minimal human intervention. These systems use advanced Artificial Intelligence technologies such as machine learning, generative AI, robotic process automation, and cognitive computing to create digital workers capable of performing tasks independently. Unlike traditional automation tools that operate on fixed rules, autonomous digital workforce systems can learn from data, adapt to changing environments, make decisions, and continuously improve operational performance. This research paper explores the architecture, functionalities, and applications of AI-powered digital workforce systems across various industries.

The study focuses on how autonomous AI systems optimize enterprise workflows, automate repetitive operations, and support real-time decision-making processes. Digital workforce systems integrate natural language processing, predictive analytics, intelligent scheduling, and multimodal AI technologies to perform tasks such as customer service management, financial analysis, document processing, cybersecurity monitoring, and industrial automation. These systems are capable of handling large volumes of data efficiently while reducing operational costs and increasing organizational productivity. Integration with cloud computing, edge AI, and Internet of Things (IoT) technologies further enhances scalability and performance.

Applications of AI-powered digital workforce systems are rapidly growing in sectors such as banking, healthcare, manufacturing, education, retail, and smart governance. Intelligent virtual assistants, AI-driven enterprise management systems, autonomous customer support platforms, and predictive maintenance solutions demonstrate the real-world impact of digital workforce automation. These systems improve workflow accuracy, reduce human errors, and enable organizations to achieve faster and more efficient digital transformation.

Despite its advantages, several challenges exist in implementing autonomous digital workforce systems, including ethical concerns, workforce adaptation, data security, transparency, and trustworthiness of AI decisions. Ensuring responsible AI governance and explainable automation models is essential for sustainable deployment. Future advancements are expected to focus on collaborative human-AI ecosystems, adaptive cognitive agents, self-learning automation platforms, and intelligent enterprise orchestration systems.

The research concludes that AI-Powered Autonomous Digital Workforce Systems will become a key driver of future intelligent enterprises by transforming business operations through scalable, adaptive, and autonomous automation technologies.

Keywords: Autonomous Digital Workforce, Artificial Intelligence, Intelligent Automation, Robotic Process Automation, Generative AI, Cognitive Computing, Enterprise Automation, Machine Learning, Smart Enterprises, Digital Transformation

Hyper-Personalized Generative AI for Human Interaction

Dr. Meera Suresh, Ashwin Rao

¹Human-Centered AI Professor, SRM Institute of Science and Technology, India

²NLP Engineer, Freshworks, India

Abstract: Hyper-Personalized Generative Artificial Intelligence is transforming human-computer interaction by enabling intelligent systems to provide highly customized experiences based on user behavior, preferences, emotions, and contextual information. Traditional AI systems generally provide generalized responses that may not fully satisfy individual user needs. In contrast, hyper-personalized generative AI systems utilize advanced machine learning, natural language processing, behavioral analytics, and deep learning technologies to create adaptive and personalized interactions in real time. This research paper explores the role of Hyper-Personalized Generative AI for Human Interaction across multiple digital platforms and smart applications.

The study focuses on how generative AI models analyze user data, communication patterns, emotional responses, and interaction history to generate personalized recommendations, responses, and services. These systems integrate large language models, multimodal AI, predictive analytics, and contextual reasoning techniques to improve user engagement and decision-making experiences. Hyper-personalized AI can dynamically adapt to user preferences and provide intelligent assistance in healthcare, education, e-commerce, customer support, entertainment, and smart enterprise systems. The integration of cloud computing, edge AI, and Internet of Things technologies further enhances scalability and responsiveness.

Applications of hyper-personalized generative AI include AI-powered virtual assistants, intelligent recommendation systems, adaptive learning platforms, personalized healthcare monitoring, and smart customer engagement solutions. In healthcare, personalized AI systems can provide patient-specific recommendations and predictive health insights. In education, adaptive AI tutors can create customized learning experiences based on student performance and learning styles. Businesses also use personalized generative AI to improve customer satisfaction, automate interactions, and optimize digital services.

Despite its advantages, implementing hyper-personalized AI systems presents challenges related to data privacy, ethical concerns, transparency, algorithmic bias, and security risks. Responsible AI governance and explainable AI models are essential for ensuring trust and fairness in personalized digital interactions. Future developments are expected to focus on emotional intelligence AI, autonomous personalization systems, privacy-preserving AI architectures, and advanced human-AI collaboration frameworks.

The research concludes that Hyper-Personalized Generative AI for Human Interaction will become a major technology driving future intelligent digital ecosystems by enabling adaptive, user-centric, and context-aware interaction experiences.

Keywords: Hyper-Personalized AI, Generative Artificial Intelligence, Human Interaction, Natural Language Processing, Multimodal AI, Personalized Recommendation Systems, Deep Learning, Intelligent Virtual Assistants, Predictive Analytics, Human-Centered Computing

Neural AI Operating Systems For Future Smart Devices

Dr. Karthikeyan¹ R, Divya Menon²

¹Embedded AI Researcher, NIT Trichy, India

²Systems Architect, Qualcomm India, India

Abstract: Neural AI Operating Systems are emerging as a next-generation computing framework designed to power intelligent smart devices with advanced cognitive capabilities, adaptive learning, and autonomous decision-making. Traditional operating systems primarily manage hardware and software resources using predefined computational methods. However, the increasing demand for intelligent smart devices requires operating systems capable of understanding user behavior, processing contextual information, and supporting real-time AI-driven operations. This research paper explores the development and applications of Neural AI Operating Systems for Future Smart Devices across various domains including healthcare, smart homes, wearable technologies, autonomous vehicles, industrial automation, and mobile computing.

The study focuses on integrating neural computing architectures, machine learning algorithms, edge AI, and multimodal intelligence into operating system environments. Neural AI operating systems are capable of analyzing large volumes of real-time data, optimizing resource allocation, automating system processes, and enhancing user interactions through intelligent adaptation. These systems utilize deep learning, cognitive reasoning, and predictive analytics to provide personalized experiences and autonomous functionality. Integration with cloud computing, Internet of Things (IoT), and low-power edge processing technologies further improves performance, scalability, and energy efficiency.

Applications of Neural AI Operating Systems include intelligent smartphones, autonomous robotics, AI-powered wearable healthcare devices, smart industrial controllers, and adaptive virtual assistants. These systems can support predictive maintenance, voice-based interaction, intelligent automation, and context-aware computing in real time. Neural AI operating systems also improve device security by incorporating intelligent threat detection and adaptive cybersecurity mechanisms. Furthermore, they enhance system responsiveness and optimize computational workloads for modern AI applications.

Despite their advantages, implementing Neural AI Operating Systems involves challenges such as high computational complexity, energy consumption, data privacy concerns, security vulnerabilities, and ethical considerations. Ensuring transparency, explainability, and responsible AI governance is essential for building trustworthy intelligent systems. Future advancements are expected to focus on neuromorphic computing, self-learning architectures, AI-native hardware integration, and fully autonomous smart device ecosystems.

The research concludes that Neural AI Operating Systems for Future Smart Devices will become a foundational technology for next-generation intelligent computing environments by enabling adaptive, autonomous, and highly efficient digital experiences.

Keywords: Neural AI Operating Systems, Smart Devices, Edge AI, Intelligent Computing, Neuromorphic Computing, Machine Learning, Autonomous Systems, Cognitive Computing, Internet of Things, Adaptive AI

AI-To-AI Communication Frameworks for Autonomous Networks

Dr. Priyadharshini V¹, Mr. Mohammed Irfan²

¹Network Intelligence Scientist, PSG Tech, India

²AI Network Engineer, Cisco Systems India

Abstract: AI-to-AI Communication Frameworks are emerging as an advanced technology for enabling intelligent interaction between autonomous artificial intelligence systems within modern digital networks. Traditional communication systems mainly rely on human-controlled data exchange and predefined networking protocols. However, future autonomous environments require intelligent AI systems capable of communicating, collaborating, sharing knowledge, and making collective decisions without direct human intervention. This research paper explores the development and applications of AI-to-AI Communication Frameworks for Autonomous Networks in smart computing ecosystems.

The study focuses on integrating machine learning, generative AI, neural communication protocols, edge computing, and distributed intelligence to establish efficient AI-driven communication environments. AI-to-AI frameworks enable autonomous systems to exchange real-time information, coordinate tasks, optimize network operations, and improve collective decision-making processes. These intelligent frameworks support adaptive learning, context-aware interactions, and autonomous problem-solving capabilities in dynamic environments. Advanced technologies such as large language models, reinforcement learning, swarm intelligence, and multimodal AI significantly enhance communication efficiency and system scalability.

Applications of AI-to-AI communication frameworks are rapidly expanding across industries including smart transportation, industrial automation, healthcare systems, cybersecurity, IoT ecosystems, and autonomous robotics. In smart transportation, autonomous vehicles can communicate with each other to optimize traffic flow and reduce accidents. In cybersecurity, intelligent AI agents can collaboratively identify and respond to threats in real time. Industrial automation systems can also utilize AI communication networks to coordinate robotic operations and optimize manufacturing processes. Integration with cloud computing and edge AI further improves network responsiveness and distributed intelligence capabilities.

Despite the advantages, implementing AI-to-AI communication systems involves several challenges including interoperability, data privacy, security risks, communication latency, ethical concerns, and trust management. Establishing standardized AI communication protocols and explainable decision-making systems is essential for ensuring safe and reliable deployment. Future advancements are expected to focus on autonomous AI ecosystems, decentralized intelligence, self-organizing AI networks, and cognitive communication architectures.

The research concludes that AI-to-AI Communication Frameworks for Autonomous Networks will become a critical technology for future intelligent systems by enabling seamless collaboration, adaptive networking, and autonomous digital transformation across multiple domains.

Keywords: AI-to-AI Communication, Autonomous Networks, Intelligent Systems, Machine Learning, Distributed Intelligence, Swarm Intelligence, Edge Computing, Generative AI, Cognitive Networking, Autonomous Communication Systems

Autonomous Generative AI for Real-Time Problem Solving

Dr. Sandeep Iyer¹, Aarthi Krishnan²

¹AI Innovation Lead, BITS Pilani, India

²Machine Learning Engineer, IBM India

Abstract: Autonomous Generative Artificial Intelligence is transforming modern intelligent systems by enabling real-time problem-solving capabilities with minimal human intervention. Traditional AI systems generally depend on predefined instructions and static datasets, limiting their adaptability in dynamic environments. Autonomous Generative AI combines machine learning, generative models, reinforcement learning, and cognitive reasoning techniques to create systems capable of understanding situations, generating solutions, and continuously improving decision-making processes. This research paper explores the development and applications of Autonomous Generative AI for Real-Time Problem Solving across multiple industries and digital ecosystems.

The study focuses on how autonomous AI systems analyze large-scale data, identify patterns, predict outcomes, and generate intelligent responses instantly. These systems utilize large language models, multimodal AI architectures, neural reasoning engines, and adaptive learning frameworks to solve complex real-time challenges efficiently. Autonomous generative AI systems are capable of performing dynamic workflow optimization, predictive analytics, intelligent automation, and context-aware decision-making. Integration with cloud computing, edge AI, Internet of Things (IoT), and distributed intelligence further enhances processing speed, scalability, and responsiveness.

Applications of autonomous generative AI are rapidly expanding in healthcare, cybersecurity, industrial automation, smart transportation, finance, and customer service systems. In healthcare, AI systems can assist in disease prediction and personalized treatment recommendations. In cybersecurity, autonomous AI agents can detect and respond to security threats in real time. Smart industries use generative AI for predictive maintenance, resource optimization, and automated operational management. Intelligent virtual assistants and enterprise automation systems also benefit from autonomous problem-solving capabilities.

Despite its advantages, implementing autonomous generative AI systems presents several challenges including ethical concerns, transparency issues, data privacy risks, computational complexity, and decision accountability. Ensuring trustworthy and explainable AI frameworks is essential for responsible deployment in critical applications. Future advancements are expected to focus on adaptive cognitive systems, collaborative AI agents, self-learning architectures, and human-AI cooperative intelligence.

The research concludes that Autonomous Generative AI for Real-Time Problem Solving will become a foundational technology for future intelligent ecosystems by enabling adaptive, scalable, and autonomous digital transformation across modern industries.

Keywords: Autonomous Generative AI, Real-Time Problem Solving, Machine Learning, Intelligent Automation, Generative Models, Reinforcement Learning, Cognitive Computing, Predictive Analytics, Adaptive AI, Smart Systems

Cognitive Ai Memory Systems for Human-Like Intelligence

Dr. Arun Prakash¹, Mr. Daniel Joseph¹

¹Cognitive Computing Researcher, IISc Bangalore, India

²Deep Learning Engineer, Accenture AI Labs, India

Abstract: Cognitive AI Memory Systems are emerging as an advanced approach for developing human-like intelligent systems capable of learning, remembering, reasoning, and adapting to dynamic environments. Traditional Artificial Intelligence systems primarily focus on short-term data processing and predefined computational tasks, limiting their ability to maintain contextual understanding and long-term learning capabilities. Cognitive AI Memory Systems integrate neural memory architectures, machine learning, generative AI, and cognitive computing techniques to simulate human memory and intelligent reasoning processes. This research paper explores the design and applications of Cognitive AI Memory Systems for Human-Like Intelligence in modern digital ecosystems.

The study focuses on how AI memory architectures enable intelligent systems to store, retrieve, analyze, and utilize contextual information efficiently for advanced decision-making. These systems combine deep learning, transformer models, adaptive neural networks, and reinforcement learning to create intelligent memory frameworks capable of continuous self-learning and knowledge retention. Cognitive AI memory systems improve contextual understanding, predictive reasoning, and personalized interactions across multiple applications. Integration with cloud computing, edge AI, and multimodal intelligence further enhances real-time processing and adaptive learning capabilities.

Applications of Cognitive AI Memory Systems are rapidly expanding across healthcare, education, autonomous robotics, cybersecurity, enterprise automation, and intelligent virtual assistants. In healthcare, AI memory systems can maintain patient history and provide personalized medical recommendations. In education, intelligent tutoring systems can adapt learning experiences based on student progress and behavioral analysis. Autonomous robots and digital assistants also benefit from long-term contextual awareness and intelligent interaction capabilities. Additionally, AI memory architectures support predictive analytics and automated reasoning in complex enterprise systems.

Despite the advantages, implementing cognitive AI memory systems presents several challenges including high computational complexity, data privacy concerns, ethical considerations, memory bias, and system scalability. Ensuring explainable and trustworthy AI memory architectures is essential for safe and responsible deployment. Future developments are expected to focus on neuromorphic computing, adaptive cognitive intelligence, self-organizing memory networks, and fully autonomous reasoning systems.

The research concludes that Cognitive AI Memory Systems for Human-Like Intelligence will become a foundational technology for next-generation intelligent computing environments by enabling adaptive learning, contextual awareness, and advanced human-like reasoning capabilities.

Keywords: Cognitive AI, Memory Systems, Human-Like Intelligence, Machine Learning, Deep Learning, Cognitive Computing, Neural Networks, Adaptive AI, Intelligent Systems, Generative Artificial Intelligence

Spatial Intelligence AI for Mixed Reality Applications

Dr. Nivetha Balan¹, Ms. Pooja Raman²

¹Spatial Computing Professor, Amrita Vishwa Vidyapeetham, India

²XR Developer, Meta India

Abstract; Spatial Intelligence Artificial Intelligence is emerging as a revolutionary technology for enabling intelligent interaction between digital and physical environments in mixed reality applications. Traditional computing systems mainly process two-dimensional data and provide limited environmental understanding. However, modern mixed reality systems require intelligent spatial awareness, real-time environmental analysis, and adaptive interaction capabilities. Spatial Intelligence AI integrates computer vision, machine learning, augmented reality, virtual reality, and 3D spatial computing to create immersive and intelligent digital experiences. This research paper explores the applications and advancements of Spatial Intelligence AI for Mixed Reality Applications across multiple domains.

The study focuses on how spatial AI systems analyze physical environments, recognize objects, map surroundings, and generate intelligent responses in real time. Advanced technologies such as deep learning, simultaneous localization and mapping (SLAM), multimodal AI, and neural rendering techniques enhance spatial understanding and contextual interaction. Spatial Intelligence AI systems can track user movements, identify spatial relationships, and optimize virtual object placement within real-world environments. Integration with edge computing, cloud infrastructure, and Internet of Things (IoT) technologies further improves performance, scalability, and responsiveness in mixed reality ecosystems.

Applications of Spatial Intelligence AI are rapidly expanding in healthcare, education, gaming, smart manufacturing, architecture, defense, and autonomous navigation systems. In healthcare, mixed reality platforms can assist surgeons with real-time 3D visualization during medical procedures. In education, immersive virtual learning environments provide interactive and adaptive educational experiences. Smart industrial systems utilize spatial AI for robotic automation, digital twin simulations, and predictive maintenance. Mixed reality gaming and virtual collaboration platforms also benefit from enhanced environmental awareness and realistic interaction capabilities.

Despite its advantages, implementing Spatial Intelligence AI systems presents several challenges including high computational requirements, privacy concerns, data security risks, hardware limitations, and ethical considerations. Developing efficient and explainable AI models is essential for reliable and responsible deployment. Future advancements are expected to focus on intelligent holographic systems, adaptive immersive environments, AI-driven digital twins, and fully autonomous mixed reality ecosystems.

The research concludes that Spatial Intelligence AI for Mixed Reality Applications will become a critical technology for future intelligent computing environments by enabling immersive, context-aware, and highly interactive digital experiences.

Keywords: Spatial Intelligence AI, Mixed Reality, Augmented Reality, Virtual Reality, Computer Vision, Spatial Computing, Deep Learning, Immersive Technologies, Intelligent Systems, Multimodal AI

Self-Healing Intelligent Networks Using Autonomous AI

Dr. Kavin Raj¹. Aishwarya Menon²

¹Intelligent Networking Professor, NIT Calicut, India

²Cloud AI Engineer, Google India

Abstract: Self-Healing Intelligent Networks are becoming a revolutionary advancement in modern communication and computing infrastructures by enabling autonomous detection, analysis, and recovery from network failures without human intervention. Traditional networking systems often require manual monitoring and troubleshooting, which can lead to increased downtime, reduced efficiency, and security vulnerabilities. Autonomous Artificial Intelligence technologies are transforming network management by creating intelligent systems capable of self-monitoring, adaptive learning, predictive maintenance, and automated recovery operations. This research paper explores the development and applications of Self-Healing Intelligent Networks Using Autonomous AI across future digital ecosystems.

The study focuses on integrating machine learning, generative AI, edge computing, cloud networking, and cognitive analytics to create intelligent autonomous networking frameworks. Self-healing AI networks can continuously monitor traffic patterns, identify anomalies, predict potential failures, and automatically optimize network configurations in real time. Advanced AI-driven algorithms enable dynamic resource allocation, automated threat detection, intelligent fault management, and adaptive cybersecurity mechanisms. Integration with Internet of Things (IoT), 5G infrastructure, and distributed cloud environments further enhances scalability, resilience, and network performance.

Applications of self-healing intelligent networks are rapidly expanding across smart cities, industrial automation, healthcare systems, autonomous transportation, cloud computing platforms, and cybersecurity infrastructures. In smart city environments, autonomous AI networks can optimize traffic systems, energy distribution, and public communication services. In industrial sectors, intelligent networks support predictive maintenance, robotic communication, and real-time operational monitoring. AI-powered network systems also improve cybersecurity by autonomously detecting and responding to cyber threats and security breaches before they impact critical infrastructures.

Despite its advantages, implementing self-healing AI networks presents several challenges including interoperability issues, high infrastructure costs, data privacy concerns, algorithmic transparency, and ethical considerations. Ensuring secure and explainable AI frameworks is essential for building reliable and trustworthy autonomous networking systems. Future advancements are expected to focus on AI-native communication architectures, decentralized intelligent networks, autonomous cyber defense systems, and fully adaptive digital infrastructures.

The research concludes that Self-Healing Intelligent Networks Using Autonomous AI will become a foundational technology for future communication ecosystems by enabling resilient, adaptive, secure, and highly efficient intelligent networking environments.

Keywords: Self-Healing Networks, Autonomous AI, Intelligent Networking, Machine Learning, Cybersecurity, Edge Computing, Cloud Networking, Predictive Maintenance, Internet of Things, Adaptive Networks

Generative World Models for Autonomous Robotics

Dr. Janani Vel¹, Ms. Harini Das²

¹Robotics Research Professor, SASTRA University, India

²Robotics AI Engineer, Mahindra AI Labs, India

Abstract: Generative World Models are emerging as a powerful advancement in autonomous robotics by enabling intelligent machines to understand, simulate, and predict real-world environments for adaptive decision-making. Traditional robotic systems mainly operate using predefined instructions and limited environmental awareness, restricting their ability to function effectively in dynamic conditions. Generative World Models integrate deep learning, generative artificial intelligence, reinforcement learning, and cognitive simulation techniques to create intelligent robotic systems capable of autonomous reasoning and predictive interaction. This research paper explores the development and applications of Generative World Models for Autonomous Robotics across future intelligent automation systems.

The study focuses on how autonomous robots utilize generative AI models to build internal representations of real-world environments and simulate possible outcomes before executing actions. These models enable robots to analyze surroundings, predict environmental changes, optimize movement paths, and improve task execution efficiency. Advanced technologies such as multimodal AI, neural simulation architectures, computer vision, and reinforcement learning enhance robotic perception and adaptive behavior. Integration with edge computing, cloud robotics, and Internet of Things (IoT) technologies further improves scalability, responsiveness, and real-time autonomous performance.

Applications of generative world models are rapidly expanding in industrial automation, autonomous vehicles, healthcare robotics, smart manufacturing, defense systems, warehouse management, and space exploration. In industrial environments, autonomous robots can optimize production workflows and perform predictive maintenance tasks. Healthcare robots use intelligent world models for surgical assistance, rehabilitation support, and patient monitoring. Autonomous transportation systems also benefit from predictive environmental understanding and adaptive navigation capabilities. Additionally, robotic systems in disaster response and space missions can utilize generative world models for autonomous exploration and decision-making in uncertain environments.

Despite its advantages, implementing generative world models in robotics presents several challenges including high computational complexity, real-time processing limitations, safety concerns, ethical considerations, and data security risks. Ensuring explainable and trustworthy AI architectures is essential for reliable robotic deployment. Future advancements are expected to focus on self-learning robotic ecosystems, neuromorphic computing, collaborative robotic intelligence, and fully autonomous adaptive machines.

The research concludes that Generative World Models for Autonomous Robotics will become a foundational technology for next-generation intelligent robotic systems by enabling predictive reasoning, adaptive learning, and autonomous environmental interaction.

Keywords: Generative World Models, Autonomous Robotics, Artificial Intelligence, Reinforcement Learning, Computer Vision, Cognitive Robotics, Machine Learning, Intelligent Automation, Predictive Simulation, Adaptive Robotics

Adaptive AI Reasoning Engines for Complex Analytics

Dr. Venkatesh Raman¹. Naveen George²

¹AI Analytics Researcher, Delhi Technological University, India

²Data Intelligence Engineer, Oracle India

Abstract: Adaptive AI Reasoning Engines are emerging as an advanced intelligent computing technology for solving complex analytical problems through autonomous reasoning, learning, and decision-making capabilities. Traditional analytics systems mainly depend on static algorithms and predefined rules, limiting their ability to handle dynamic and uncertain environments. Adaptive AI reasoning systems integrate machine learning, generative artificial intelligence, cognitive computing, and neural reasoning architectures to create intelligent analytical frameworks capable of continuous learning and contextual understanding. This research paper explores the development and applications of Adaptive AI Reasoning Engines for Complex Analytics across multiple industries and digital ecosystems.

The study focuses on how AI reasoning engines analyze large-scale structured and unstructured datasets to identify patterns, generate insights, predict outcomes, and optimize decision-making processes. These intelligent systems utilize deep learning, reinforcement learning, natural language processing, and multimodal AI techniques to perform advanced analytical reasoning in real time. Adaptive reasoning engines continuously improve performance through self-learning mechanisms and contextual adaptation. Integration with cloud computing, edge AI, big data infrastructures, and Internet of Things (IoT) technologies further enhances scalability, responsiveness, and computational efficiency.

Applications of adaptive AI reasoning systems are rapidly expanding in healthcare analytics, financial forecasting, cybersecurity, smart governance, industrial automation, scientific research, and enterprise intelligence systems. In healthcare, AI reasoning engines support disease prediction, personalized treatment planning, and medical data analysis. Financial institutions use adaptive AI systems for fraud detection, market prediction, and intelligent risk assessment. In cybersecurity, reasoning engines autonomously identify threats, analyze attack patterns, and optimize defense mechanisms. Smart industries also benefit from predictive maintenance, workflow optimization, and intelligent operational analytics.

Despite its advantages, implementing adaptive AI reasoning engines presents several challenges including data privacy concerns, computational complexity, ethical considerations, algorithmic transparency, and trustworthiness of AI decisions. Ensuring explainable and secure AI frameworks is essential for reliable deployment in critical applications. Future advancements are expected to focus on cognitive AI ecosystems, self-evolving reasoning architectures, autonomous analytical agents, and collaborative human-AI intelligence systems.

The research concludes that Adaptive AI Reasoning Engines for Complex Analytics will become a key technology for future intelligent computing environments by enabling adaptive learning, real-time analytical reasoning, and autonomous decision optimization.

Keywords: Adaptive AI, Reasoning Engines, Complex Analytics, Cognitive Computing, Machine Learning, Generative AI, Deep Learning, Predictive Analytics, Intelligent Systems, Autonomous Decision Making

AI-Powered Synthetic Human Behavior Modeling

Dr. Bhavana Nair¹, Rithika Sharma²

¹Behavioral AI Scientist, Christ University, India

¹Simulation Analyst, Deloitte India

Abstract: AI-Powered Synthetic Human Behavior Modeling is emerging as an advanced technology for simulating realistic human actions, emotions, decision-making patterns, and social interactions within digital environments. Traditional simulation systems generally rely on predefined behavioral rules and static datasets, limiting their ability to replicate complex human behavior accurately. Artificial Intelligence technologies such as machine learning, generative AI, neural networks, and cognitive computing enable the development of intelligent behavioral models capable of adaptive learning and realistic simulation. This research paper explores the applications and advancements of AI-Powered Synthetic Human Behavior Modeling across multiple intelligent systems and virtual environments.

The study focuses on how AI systems analyze large-scale behavioral data, communication patterns, emotional responses, and decision-making activities to generate realistic synthetic human models. These intelligent systems utilize deep learning, natural language processing, reinforcement learning, and multimodal AI architectures to simulate adaptive human interactions in real time. Synthetic behavior models can predict responses, analyze crowd dynamics, optimize social simulations, and improve intelligent decision-support systems. Integration with cloud computing, virtual reality, edge AI, and Internet of Things (IoT) technologies further enhances scalability and real-time processing capabilities.

Applications of synthetic human behavior modeling are rapidly expanding across healthcare, defense, education, smart cities, gaming, cybersecurity, marketing analytics, and autonomous systems. In healthcare, AI-driven behavior models assist in mental health analysis, patient interaction simulations, and rehabilitation support systems. In defense and smart city planning, synthetic behavioral simulations help analyze crowd movement, emergency responses, and urban management strategies. Gaming and virtual reality platforms use realistic AI-generated human behaviors to create immersive interactive experiences. Businesses also utilize behavioral AI models for customer analytics, market prediction, and intelligent recommendation systems.

Despite its advantages, implementing AI-powered synthetic human behavior systems presents several challenges including ethical concerns, privacy risks, behavioral bias, data security, and transparency issues. Ensuring responsible AI governance and explainable behavioral models is essential for trustworthy deployment. Future advancements are expected to focus on emotional intelligence AI, digital human ecosystems, adaptive cognitive simulations, and autonomous social interaction systems.

The research concludes that AI-Powered Synthetic Human Behavior Modeling will become a significant technology for future intelligent systems by enabling realistic, adaptive, and context-aware human behavior simulation across digital environments.

Keywords: Synthetic Human Behavior, Artificial Intelligence, Behavioral Modeling, Cognitive Computing, Generative AI, Deep Learning, Reinforcement Learning, Virtual Simulation, Human-AI Interaction, Intelligent Systems

Universal Multimodal AI for Intelligent Automation

Dr. Sanjana Devi¹, Vishnu Raj²

¹Intelligent Automation Professor, Manipal Institute of Technology, India

²AI Systems Developer, Capgemini India

Abstract: Universal Multimodal Artificial Intelligence is emerging as a transformative technology for enabling intelligent automation through the integration of multiple data modalities such as text, audio, images, video, and sensor information within a unified AI framework. Traditional automation systems mainly process single-source data, limiting their ability to understand complex real-world environments. Universal Multimodal AI combines machine learning, deep learning, computer vision, natural language processing, and generative AI techniques to create adaptive systems capable of comprehensive environmental understanding and autonomous decision-making. This research paper explores the development and applications of Universal Multimodal AI for Intelligent Automation across modern digital ecosystems.

The study focuses on how multimodal AI systems analyze and integrate heterogeneous data sources to improve automation accuracy, contextual reasoning, and operational efficiency. These intelligent systems utilize transformer architectures, neural attention mechanisms, reinforcement learning, and cognitive AI frameworks to perform complex automated tasks in real time. Universal multimodal AI enables systems to recognize speech, interpret visual information, process textual data, and respond intelligently within dynamic environments. Integration with cloud computing, edge AI, Internet of Things (IoT), and distributed intelligence further enhances scalability, responsiveness, and autonomous capabilities.

Applications of universal multimodal AI are rapidly expanding in healthcare, smart manufacturing, autonomous transportation, education, customer service, cybersecurity, and smart city infrastructures. In healthcare, multimodal AI systems can combine medical imaging, patient records, and voice analysis for accurate diagnosis and treatment planning. Smart industries use multimodal automation for predictive maintenance, robotic coordination, and workflow optimization. Intelligent customer support systems utilize speech, text, and emotional analysis to provide personalized services. Autonomous vehicles also benefit from multimodal perception and adaptive navigation capabilities.

Despite its advantages, implementing universal multimodal AI systems presents several challenges including computational complexity, data privacy risks, model interoperability, ethical concerns, and infrastructure requirements. Developing explainable, secure, and energy-efficient AI frameworks is essential for sustainable deployment. Future advancements are expected to focus on self-learning multimodal architectures, autonomous cognitive ecosystems, human-AI collaboration, and AI-native automation platforms.

The research concludes that Universal Multimodal AI for Intelligent Automation will become a foundational technology for future intelligent systems by enabling adaptive, scalable, and context-aware automation across diverse digital environments.

Keywords: Multimodal AI, Intelligent Automation, Artificial Intelligence, Computer Vision, Natural Language Processing, Generative AI, Machine Learning, Cognitive Computing, Deep Learning, Autonomous Systems

AI-Driven Digital Brain Architectures for Smart Computing

Dr. Abhishek Kumar¹, Gayathri S²

¹Neural Systems Researcher, IIT Kanpur, India

²AI Hardware Engineer, Intel India

Abstract: AI-Driven Digital Brain Architectures are emerging as an advanced intelligent computing framework inspired by the structure and functionalities of the human brain. Traditional computing architectures mainly rely on sequential processing methods and fixed computational models, which limit adaptability and intelligent reasoning capabilities. Digital brain architectures integrate artificial intelligence, neural computing, cognitive systems, deep learning, and neuromorphic engineering to create highly adaptive and autonomous smart computing environments. This research paper explores the development and applications of AI-Driven Digital Brain Architectures for Smart Computing across future intelligent digital systems.

The study focuses on how AI-powered brain-inspired architectures simulate neural processing, memory functions, reasoning mechanisms, and learning behaviors to improve intelligent decision-making and computational efficiency. These systems utilize artificial neural networks, reinforcement learning, cognitive reasoning engines, and multimodal AI frameworks to process large-scale data and perform autonomous operations in real time. AI-driven digital brain systems can continuously learn from interactions, adapt to changing environments, and optimize computational performance dynamically. Integration with cloud computing, edge AI, Internet of Things (IoT), and neuromorphic hardware further enhances scalability, energy efficiency, and processing speed.

Applications of digital brain architectures are rapidly expanding in healthcare, robotics, autonomous vehicles, smart manufacturing, cybersecurity, education, and enterprise intelligence systems. In healthcare, brain-inspired AI systems assist in disease prediction, personalized treatment analysis, and intelligent medical decision support. Autonomous robotic systems use digital brain architectures for adaptive navigation, object recognition, and intelligent interaction. Smart industries also benefit from predictive analytics, workflow optimization, and autonomous operational management. Additionally, intelligent virtual assistants and smart computing platforms utilize cognitive AI capabilities to improve contextual understanding and personalized user experiences.

Despite its advantages, implementing AI-driven digital brain architectures presents several challenges including computational complexity, hardware limitations, ethical concerns, data privacy risks, and explainability issues. Ensuring secure and trustworthy AI frameworks is essential for reliable deployment in critical systems. Future advancements are expected to focus on self-learning cognitive ecosystems, AI-native processors, adaptive memory architectures, and fully autonomous intelligent computing environments.

The research concludes that AI-Driven Digital Brain Architectures for Smart Computing will become a foundational technology for future intelligent systems by enabling adaptive learning, human-like reasoning, and highly efficient autonomous computing capabilities.

Keywords: Digital Brain Architectures, Smart Computing, Artificial Intelligence, Cognitive Computing, Neuromorphic Engineering, Deep Learning, Neural Networks, Autonomous Systems, Machine Learning, Intelligent Computing

Autonomous AI Collaboration Using Swarm Intelligence

Dr. Keerthi Mohan¹, Suraj Menon²

¹Swarm Intelligence Specialist, IIT Hyderabad, India

²Autonomous Systems Engineer, Bosch India

Abstract: Autonomous AI Collaboration Using Swarm Intelligence is emerging as a revolutionary approach for developing intelligent systems capable of cooperative decision-making, adaptive learning, and decentralized problem-solving. Traditional artificial intelligence systems generally rely on centralized architectures and predefined operational rules, limiting scalability and flexibility in dynamic environments. Swarm Intelligence is inspired by the collective behavior of natural systems such as ants, bees, birds, and fish, where multiple agents collaborate intelligently to achieve complex objectives. This research paper explores the applications and advancements of Autonomous AI Collaboration Using Swarm Intelligence across modern intelligent computing ecosystems.

The study focuses on integrating machine learning, generative AI, distributed intelligence, reinforcement learning, and multi-agent systems to create autonomous collaborative AI frameworks. Swarm-based AI systems enable multiple intelligent agents to communicate, coordinate, share information, and optimize collective decision-making processes in real time. These systems are capable of self-organization, adaptive behavior, fault tolerance, and autonomous resource management. Advanced technologies such as edge computing, cloud AI, Internet of Things (IoT), and neural communication architectures further enhance scalability, responsiveness, and operational efficiency.

Applications of swarm intelligence AI systems are rapidly expanding in robotics, smart transportation, industrial automation, cybersecurity, disaster management, drone coordination, and smart city infrastructures. In autonomous robotics, swarm intelligence enables collaborative robotic operations for warehouse automation, manufacturing, and exploration tasks. Smart transportation systems utilize collaborative AI agents to optimize traffic flow, reduce congestion, and improve autonomous vehicle coordination. In cybersecurity, distributed AI agents can collaboratively detect threats, analyze attack patterns, and autonomously respond to security breaches. Disaster management systems also benefit from swarm intelligence for search-and-rescue operations and real-time environmental monitoring.

Despite its advantages, implementing autonomous swarm intelligence systems presents several challenges including communication latency, coordination complexity, data security risks, interoperability issues, and ethical concerns. Ensuring reliable communication protocols, explainable AI frameworks, and secure distributed architectures is essential for trustworthy deployment. Future advancements are expected to focus on self-evolving AI swarms, decentralized autonomous ecosystems, collaborative cognitive intelligence, and fully adaptive multi-agent networks.

The research concludes that Autonomous AI Collaboration Using Swarm Intelligence will become a foundational technology for future intelligent systems by enabling scalable, adaptive, and cooperative autonomous operations across diverse digital environments.

Keywords: Swarm Intelligence, Autonomous AI, Multi-Agent Systems, Distributed Intelligence, Machine Learning, Reinforcement Learning, Intelligent Automation, Edge Computing, Autonomous Collaboration, Smart Systems

Predictive AI Agents for Next-Generation Cyber Defense

Dr. Ashok Prabhu¹, Jennifer Roy²

¹Cyber AI Scientist, IIIT Bangalore, India

²Security Research Engineer, Palo Alto Networks India

Abstract: Predictive AI Agents are emerging as an advanced cybersecurity technology for protecting modern digital infrastructures against rapidly evolving cyber threats and intelligent attacks. Traditional cybersecurity systems mainly rely on predefined rules, manual monitoring, and reactive defense mechanisms, which are often insufficient against sophisticated cyberattacks. Predictive AI Agents integrate machine learning, generative artificial intelligence, behavioral analytics, and autonomous reasoning techniques to identify, predict, and neutralize security threats before they impact critical systems. This research paper explores the applications and advancements of Predictive AI Agents for Next-Generation Cyber Defense across modern intelligent security ecosystems.

The study focuses on how autonomous AI agents analyze network traffic, system behavior, user activities, and threat intelligence data to detect anomalies and predict potential cyberattacks in real time. Advanced technologies such as deep learning, reinforcement learning, neural threat analysis, and cognitive computing enable AI systems to continuously adapt to evolving attack patterns and optimize cybersecurity operations. Predictive AI agents can autonomously monitor infrastructures, generate threat alerts, automate incident response, and strengthen defense mechanisms without extensive human intervention. Integration with cloud computing, edge AI, blockchain security, and Internet of Things (IoT) technologies further improves scalability, resilience, and operational efficiency.

Applications of predictive AI cybersecurity systems are rapidly expanding in banking, healthcare, government infrastructures, industrial automation, smart cities, cloud platforms, and enterprise security environments. In financial institutions, AI agents help prevent fraud, phishing attacks, and data breaches through predictive analytics and intelligent monitoring. Healthcare systems utilize AI-based cyber defense mechanisms to secure patient data and connected medical devices. Smart industrial systems and autonomous infrastructures also benefit from continuous threat prediction and adaptive cybersecurity frameworks.

Despite its advantages, implementing predictive AI agents in cybersecurity presents several challenges including data privacy concerns, adversarial AI attacks, ethical considerations, transparency issues, and high computational requirements. Ensuring explainable, secure, and trustworthy AI defense frameworks is essential for reliable deployment. Future advancements are expected to focus on autonomous cyber defense ecosystems, self-learning security agents, collaborative threat intelligence systems, and AI-native cybersecurity architectures.

The research concludes that Predictive AI Agents for Next-Generation Cyber Defense will become a foundational technology for future digital security systems by enabling proactive, adaptive, and intelligent cyber protection across modern connected environments.

Keywords: Predictive AI, Cyber Defense, Artificial Intelligence, Cybersecurity, Machine Learning, Threat Detection, Generative AI, Cognitive Computing, Autonomous Security Systems, Intelligent Threat Analytics

Human-Aware AI Systems for Personalized Smart Services

Dr. Lakshmi Narayanan¹, Akshay Verma²

¹Smart Systems Professor, Anna University, India

²AI Interaction Designer, Cognizant Technology Solutions, India

Abstract: Human-Aware Artificial Intelligence Systems are emerging as a transformative technology for delivering personalized smart services through intelligent understanding of human behavior, preferences, emotions, and contextual interactions. Traditional AI systems mainly focus on task execution and data processing without fully understanding human needs and real-world behavioral patterns. Human-aware AI integrates machine learning, generative AI, cognitive computing, emotional intelligence, and behavioral analytics to create adaptive systems capable of intelligent human-centered interaction. This research paper explores the development and applications of Human-Aware AI Systems for Personalized Smart Services across modern digital ecosystems.

The study focuses on how AI systems analyze user behavior, communication patterns, emotional responses, and contextual information to provide personalized recommendations and adaptive services. Advanced technologies such as natural language processing, multimodal AI, deep learning, reinforcement learning, and predictive analytics enable intelligent systems to understand user intent and dynamically optimize interactions in real time. Human-aware AI systems continuously learn from user activities and environmental changes to improve personalization, decision-making, and service quality. Integration with cloud computing, edge AI, wearable devices, and Internet of Things (IoT) technologies further enhances scalability and responsiveness.

Applications of human-aware AI systems are rapidly expanding in healthcare, education, smart homes, e-commerce, customer support, entertainment, and intelligent transportation systems. In healthcare, AI-driven personalized systems provide patient-specific recommendations, health monitoring, and adaptive treatment support. Smart education platforms use behavioral AI to customize learning experiences based on student performance and interaction patterns. Intelligent customer service systems utilize emotional analysis and contextual understanding to improve user engagement and satisfaction. Smart home ecosystems also benefit from adaptive automation and personalized environmental control.

Despite its advantages, implementing human-aware AI systems presents several challenges including data privacy concerns, ethical considerations, emotional bias, security risks, and transparency issues. Ensuring responsible AI governance, explainable AI frameworks, and secure personalization mechanisms is essential for trustworthy deployment. Future advancements are expected to focus on emotionally intelligent AI, autonomous personalization engines, cognitive human-AI collaboration, and adaptive smart ecosystems.

The research concludes that Human-Aware AI Systems for Personalized Smart Services will become a foundational technology for future intelligent digital environments by enabling adaptive, context-aware, and highly personalized human-centered experiences.

Keywords: Human-Aware AI, Personalized Smart Services, Artificial Intelligence, Behavioral Analytics, Cognitive Computing, Emotional Intelligence, Machine Learning, Multimodal AI, Predictive Analytics, Human-AI Interaction

NeuroAdaptive AI Frameworks for Cognitive Computing

¹Monisha Ravi, ²Shreya Paul

¹Cognitive AI Researcher, Vellore Institute of Technology, India

²Neural Computing Analyst, HCL Technologies, India

Abstract: NeuroAdaptive AI Frameworks are emerging as an advanced intelligent computing technology inspired by the adaptive learning and cognitive functionalities of the human brain. Traditional computing systems generally operate using fixed algorithms and predefined decision-making processes, limiting their ability to adapt dynamically to changing environments. NeuroAdaptive AI combines machine learning, neural computing, cognitive intelligence, deep learning, and adaptive reasoning architectures to create highly flexible and autonomous intelligent systems. This research paper explores the development and applications of NeuroAdaptive AI Frameworks for Cognitive Computing across modern digital ecosystems and future intelligent infrastructures.

The study focuses on how neuroadaptive AI systems simulate neural learning, cognitive reasoning, memory adaptation, and contextual understanding to improve intelligent decision-making processes. These systems utilize artificial neural networks, reinforcement learning, multimodal AI, and cognitive computing frameworks to process complex structured and unstructured data efficiently. NeuroAdaptive AI systems continuously learn from interactions, adapt to environmental changes, and optimize performance autonomously. Integration with cloud computing, edge AI, Internet of Things (IoT), and neuromorphic hardware technologies further enhances scalability, computational efficiency, and real-time responsiveness.

Applications of neuroadaptive AI frameworks are rapidly expanding in healthcare, autonomous robotics, smart manufacturing, cybersecurity, education, intelligent transportation, and enterprise automation systems. In healthcare, adaptive AI systems assist in personalized treatment planning, disease prediction, and intelligent medical decision support. Autonomous robotic systems utilize cognitive AI for adaptive navigation, environmental interaction, and real-time decision-making. Smart industries benefit from predictive maintenance, workflow optimization, and intelligent automation using adaptive learning capabilities. AI-driven virtual assistants and smart computing platforms also improve contextual understanding and user interaction experiences through cognitive adaptation.

Despite its advantages, implementing neuroadaptive AI systems presents several challenges including computational complexity, ethical concerns, data privacy risks, explainability issues, and high infrastructure requirements. Developing secure, transparent, and energy-efficient AI architectures is essential for sustainable deployment. Future advancements are expected to focus on self-learning cognitive ecosystems, neuromorphic intelligence, adaptive memory architectures, and collaborative human-AI cognitive systems.

The research concludes that NeuroAdaptive AI Frameworks for Cognitive Computing will become a foundational technology for future intelligent systems by enabling adaptive learning, cognitive reasoning, and autonomous smart computing capabilities.

Keywords: NeuroAdaptive AI, Cognitive Computing, Artificial Intelligence, Neural Networks, Deep Learning, Machine Learning, Neuromorphic Computing, Intelligent Systems, Adaptive Learning, Cognitive Intelligence

AI-Generated Simulation Systems for Smart Research

Dr. Deepak Sharma¹, Rohan Iyer²

¹Simulation Technology Scientist, IIT Delhi, India

²Research Automation Engineer, DRDO, India

Abstract: AI-Generated Simulation Systems are emerging as a transformative technology for enhancing smart research environments through intelligent modeling, predictive analysis, and autonomous experimentation. Traditional research simulation systems mainly rely on manually designed models and predefined datasets, which limit adaptability and real-time analytical capabilities. Artificial Intelligence technologies such as machine learning, generative AI, cognitive computing, and neural simulation frameworks enable the creation of intelligent simulation systems capable of dynamic learning and autonomous optimization. This research paper explores the applications and advancements of AI-Generated Simulation Systems for Smart Research across scientific, industrial, and technological domains.

The study focuses on how AI-driven simulation systems analyze large-scale data, generate predictive models, simulate complex real-world scenarios, and optimize experimental processes in real time. These intelligent systems utilize deep learning, reinforcement learning, multimodal AI, and neural reasoning architectures to improve simulation accuracy, computational efficiency, and contextual understanding. AI-generated simulations can autonomously adapt to changing variables, identify hidden patterns, and generate data-driven insights for advanced research analysis. Integration with cloud computing, edge AI, high-performance computing, and Internet of Things (IoT) technologies further enhances scalability and real-time responsiveness.

Applications of AI-generated simulation systems are rapidly expanding in healthcare, climate science, aerospace engineering, robotics, cybersecurity, industrial automation, education, and smart city planning. In healthcare, AI simulation models assist in disease prediction, drug discovery, and personalized treatment analysis. Aerospace industries utilize intelligent simulations for autonomous navigation, mission planning, and predictive maintenance. Smart industries also benefit from virtual testing environments, workflow optimization, and digital twin technologies. Research institutions increasingly use AI-generated simulations for scientific experimentation, complex data analysis, and intelligent decision support systems.

Despite its advantages, implementing AI-generated simulation systems presents several challenges including computational complexity, model transparency, data security risks, ethical considerations, and infrastructure costs. Ensuring explainable and trustworthy AI simulation frameworks is essential for reliable deployment in critical research applications. Future advancements are expected to focus on autonomous research ecosystems, AI-native simulation architectures, cognitive digital twins, and self-learning predictive environments.

The research concludes that AI-Generated Simulation Systems for Smart Research will become a foundational technology for future intelligent research infrastructures by enabling adaptive simulation, predictive reasoning, and autonomous scientific innovation.

Keywords: AI-Generated Simulation, Smart Research, Artificial Intelligence, Predictive Modeling, Cognitive Computing, Deep Learning, Reinforcement Learning, Digital Twin, Intelligent Systems, Autonomous Simulation

Self-Healing Intelligent Networks Using Autonomous AI

Dr. Kavin Raj¹, Aishwarya Menon²

¹Intelligent Networking Professor, NIT Calicut, India

²Cloud AI Engineer, Google India

Abstract: Self-Healing Intelligent Networks are becoming a revolutionary advancement in modern communication and computing infrastructures by enabling autonomous detection, analysis, and recovery from network failures without human intervention. Traditional networking systems often require manual monitoring and troubleshooting, which can lead to increased downtime, reduced efficiency, and security vulnerabilities. Autonomous Artificial Intelligence technologies are transforming network management by creating intelligent systems capable of self-monitoring, adaptive learning, predictive maintenance, and automated recovery operations. This research paper explores the development and applications of Self-Healing Intelligent Networks Using Autonomous AI across future digital ecosystems.

The study focuses on integrating machine learning, generative AI, edge computing, cloud networking, and cognitive analytics to create intelligent autonomous networking frameworks. Self-healing AI networks can continuously monitor traffic patterns, identify anomalies, predict potential failures, and automatically optimize network configurations in real time. Advanced AI-driven algorithms enable dynamic resource allocation, automated threat detection, intelligent fault management, and adaptive cybersecurity mechanisms. Integration with Internet of Things (IoT), 5G infrastructure, and distributed cloud environments further enhances scalability, resilience, and network performance.

Applications of self-healing intelligent networks are rapidly expanding across smart cities, industrial automation, healthcare systems, autonomous transportation, cloud computing platforms, and cybersecurity infrastructures. In smart city environments, autonomous AI networks can optimize traffic systems, energy distribution, and public communication services. In industrial sectors, intelligent networks support predictive maintenance, robotic communication, and real-time operational monitoring. AI-powered network systems also improve cybersecurity by autonomously detecting and responding to cyber threats and security breaches before they impact critical infrastructures.

Despite its advantages, implementing self-healing AI networks presents several challenges including interoperability issues, high infrastructure costs, data privacy concerns, algorithmic transparency, and ethical considerations. Ensuring secure and explainable AI frameworks is essential for building reliable and trustworthy autonomous networking systems. Future advancements are expected to focus on AI-native communication architectures, decentralized intelligent networks, autonomous cyber defense systems, and fully adaptive digital infrastructures.

The research concludes that Self-Healing Intelligent Networks Using Autonomous AI will become a foundational technology for future communication ecosystems by enabling resilient, adaptive, secure, and highly efficient intelligent networking environments.

Keywords: Self-Healing Networks, Autonomous AI, Intelligent Networking, Machine Learning, Cybersecurity, Edge Computing, Cloud Networking, Predictive Maintenance, Internet of Things, Adaptive Networks

AI-Powered Reality Fusion Systems for Virtual Environments

Dr. Shalini Verghese¹, Aditya Krishna²

¹Virtual Systems Researcher, Amity University, India

²Mixed Reality Developer, Infosys Metaverse Division, India

Abstract: AI-Powered Reality Fusion Systems are emerging as an advanced technology for integrating physical and digital environments to create immersive and intelligent virtual experiences. Traditional virtual systems generally operate within isolated digital environments with limited interaction between real-world and virtual elements. Reality fusion technologies combine artificial intelligence, augmented reality, virtual reality, computer vision, and spatial computing to enable seamless interaction between physical and digital spaces. This research paper explores the development and applications of AI-Powered Reality Fusion Systems for Virtual Environments across future intelligent ecosystems.

The study focuses on how AI-driven fusion systems analyze environmental data, user interactions, spatial information, and digital content to generate immersive and adaptive virtual experiences in real time. Advanced technologies such as deep learning, multimodal AI, neural rendering, and cognitive computing enhance contextual understanding and environmental awareness. Reality fusion systems can intelligently synchronize virtual objects with real-world environments, optimize user interaction, and support autonomous decision-making within immersive digital platforms. Integration with cloud computing, edge AI, Internet of Things (IoT), and 5G communication networks further improves scalability, responsiveness, and operational efficiency.

Applications of AI-powered reality fusion systems are rapidly expanding in healthcare, education, entertainment, gaming, smart manufacturing, architecture, defense, and remote collaboration systems. In healthcare, immersive AI-driven environments assist in surgical training, rehabilitation therapy, and medical visualization. Educational platforms use reality fusion technologies to create interactive and personalized learning experiences. Smart industries utilize virtual simulations and digital twin systems for predictive maintenance, robotic coordination, and workflow optimization. Entertainment and gaming industries also benefit from adaptive immersive experiences and intelligent user engagement systems.

Despite its advantages, implementing AI-powered reality fusion systems presents several challenges including computational complexity, data privacy concerns, hardware limitations, security vulnerabilities, and ethical considerations. Developing explainable and energy-efficient AI frameworks is essential for reliable deployment in large-scale virtual ecosystems. Future advancements are expected to focus on holographic computing, intelligent metaverse infrastructures, adaptive immersive environments, and autonomous virtual collaboration systems.

The research concludes that AI-Powered Reality Fusion Systems for Virtual Environments will become a foundational technology for future intelligent digital ecosystems by enabling immersive, adaptive, and highly interactive virtual experiences.

Keywords: AI-Powered Reality Fusion, Virtual Environments, Mixed Reality, Artificial Intelligence, Spatial Computing, Computer Vision, Deep Learning, Immersive Technologies, Digital Twin, Intelligent Systems

Machine Reasoning Models for Autonomous Enterprise Intelligence

Dr. Pradeep Narayan¹, Keerthana Iyer²

¹Enterprise AI Consultant, Symbiosis Institute of Technology, India

²Business Intelligence Engineer, EY India

Abstract: Machine Reasoning Models are emerging as a transformative technology for enabling autonomous enterprise intelligence through advanced analytical reasoning, adaptive learning, and intelligent decision-making. Traditional enterprise systems generally rely on rule-based analytics and manual operational management, which limit scalability and real-time responsiveness in dynamic business environments. Machine reasoning technologies integrate artificial intelligence, cognitive computing, machine learning, deep learning, and generative AI to create intelligent enterprise systems capable of autonomous analysis and optimized strategic planning. This research paper explores the development and applications of Machine Reasoning Models for Autonomous Enterprise Intelligence across modern business ecosystems.

The study focuses on how intelligent reasoning models process structured and unstructured enterprise data to generate insights, predict operational outcomes, optimize workflows, and support autonomous business decision-making. Advanced technologies such as reinforcement learning, neural reasoning architectures, natural language processing, and multimodal AI enhance analytical intelligence and contextual understanding. Machine reasoning systems can continuously learn from enterprise operations, adapt to market changes, identify hidden patterns, and autonomously optimize organizational performance. Integration with cloud computing, edge AI, big data infrastructures, and Internet of Things (IoT) technologies further improves scalability, computational efficiency, and real-time enterprise responsiveness.

Applications of machine reasoning models are rapidly expanding in financial analytics, smart manufacturing, supply chain optimization, healthcare management, cybersecurity, customer relationship management, and intelligent enterprise automation. In financial sectors, reasoning AI systems support fraud detection, predictive analytics, and risk management. Smart industries utilize autonomous enterprise intelligence for workflow optimization, predictive maintenance, and intelligent operational control. Healthcare organizations benefit from adaptive decision-support systems and intelligent patient management platforms. Enterprise cybersecurity systems also use reasoning models for intelligent threat analysis and automated defense mechanisms.

Despite its advantages, implementing machine reasoning systems presents several challenges including computational complexity, data privacy risks, transparency issues, ethical considerations, and integration challenges within existing enterprise infrastructures. Developing explainable, secure, and trustworthy AI frameworks is essential for sustainable deployment. Future advancements are expected to focus on self-evolving enterprise ecosystems, collaborative human-AI intelligence, autonomous business agents, and AI-native organizational infrastructures.

The research concludes that Machine Reasoning Models for Autonomous Enterprise Intelligence will become a foundational technology for future smart enterprises by enabling adaptive reasoning, autonomous optimization, and intelligent business transformation.

Keywords: Machine Reasoning, Autonomous Enterprise Intelligence, Artificial Intelligence, Cognitive Computing, Machine Learning, Predictive Analytics, Intelligent Automation, Deep Learning, Enterprise Systems, Business Intelligence

Intelligent AI Mesh Networks for Smart Infrastructure

Dr. Hari Venkataraman¹, Rahul Bose²

¹Smart Infrastructure Scientist, IIT Roorkee, India

²Network Systems Engineer, Tech Mahindra, India

Abstract: Intelligent AI Mesh Networks are emerging as a revolutionary networking framework for enabling highly adaptive, scalable, and autonomous smart infrastructure systems. Traditional communication networks generally rely on centralized architectures and static routing mechanisms, limiting their ability to efficiently manage dynamic and large-scale digital environments. AI mesh networks integrate artificial intelligence, distributed networking, edge computing, machine learning, and cognitive communication technologies to create decentralized intelligent infrastructures capable of self-management and real-time optimization. This research paper explores the development and applications of Intelligent AI Mesh Networks for Smart Infrastructure across future digital ecosystems.

The study focuses on how AI mesh networks enable intelligent devices, sensors, and autonomous systems to communicate, collaborate, and optimize operational performance dynamically. Advanced technologies such as deep learning, generative AI, reinforcement learning, and adaptive routing algorithms enhance network intelligence and environmental awareness. AI mesh systems can autonomously manage traffic flow, optimize bandwidth allocation, predict network failures, and support secure distributed communication. Integration with cloud computing, Internet of Things (IoT), 5G communication systems, and edge AI further improves scalability, reliability, and real-time responsiveness.

Applications of intelligent AI mesh networks are rapidly expanding in smart cities, industrial automation, healthcare systems, autonomous transportation, energy management, and defense infrastructures. In smart city environments, AI mesh networks support intelligent traffic management, environmental monitoring, and public communication services. Smart industries utilize distributed AI communication systems for robotic coordination, predictive maintenance, and operational automation. Healthcare infrastructures benefit from secure and adaptive medical data communication and remote patient monitoring systems. Autonomous transportation systems also use AI mesh networks for real-time vehicle coordination and intelligent navigation.

Despite its advantages, implementing intelligent AI mesh networks presents several challenges including cybersecurity threats, interoperability issues, high deployment costs, data privacy concerns, and network complexity. Ensuring secure communication protocols, explainable AI frameworks, and reliable distributed architectures is essential for sustainable deployment. Future advancements are expected to focus on autonomous networking ecosystems, AI-native communication infrastructures, decentralized intelligence systems, and self-optimizing digital environments.

The research concludes that Intelligent AI Mesh Networks for Smart Infrastructure will become a foundational technology for future intelligent ecosystems by enabling adaptive communication, autonomous optimization, and scalable smart infrastructure management.

Keywords: AI Mesh Networks, Smart Infrastructure, Artificial Intelligence, Distributed Networks, Edge Computing, Machine Learning, Intelligent Communication, Internet of Things, Autonomous Networks, Smart Systems

Generative AI Memory Architectures for Long-Term Learning

Dr. Anupama R¹, Nisha Kapoor²

¹ AI Memory Systems Researcher, IISER Pune, India

²Generative AI Engineer, Amazon Development Center India

Abstract: Generative AI Memory Architectures are emerging as a transformative technology for enabling long-term learning, adaptive intelligence, and contextual understanding in advanced artificial intelligence systems. Traditional AI models generally rely on short-term processing and limited contextual retention, restricting their ability to perform continuous learning and human-like reasoning. Generative AI memory systems integrate machine learning, neural memory architectures, cognitive computing, and deep learning technologies to create intelligent systems capable of storing, retrieving, and utilizing knowledge over extended periods. This research paper explores the development and applications of Generative AI Memory Architectures for Long-Term Learning across future intelligent computing environments.

The study focuses on how AI memory architectures simulate human-like memory functions such as knowledge retention, contextual recall, adaptive reasoning, and continuous learning. Advanced technologies including transformer networks, reinforcement learning, multimodal AI, and neural attention mechanisms enable intelligent systems to process large-scale data and maintain contextual continuity across interactions. Generative AI memory systems can autonomously learn from experiences, optimize decision-making processes, and improve analytical performance over time. Integration with cloud computing, edge AI, Internet of Things (IoT), and cognitive reasoning frameworks further enhances scalability, responsiveness, and computational efficiency.

Applications of generative AI memory architectures are rapidly expanding in healthcare, education, autonomous robotics, intelligent virtual assistants, cybersecurity, enterprise automation, and smart research systems. In healthcare, long-term AI memory systems support patient history analysis, personalized treatment recommendations, and predictive healthcare analytics. Educational platforms utilize adaptive memory systems to personalize learning experiences based on student progress and interaction history. Autonomous robotic systems and intelligent assistants also benefit from contextual awareness, predictive reasoning, and continuous learning capabilities. Enterprise systems use AI memory architectures for knowledge management, intelligent workflow automation, and decision-support operations.

Despite its advantages, implementing generative AI memory systems presents several challenges including computational complexity, data privacy risks, ethical concerns, memory bias, and infrastructure limitations. Developing secure, explainable, and energy-efficient AI memory frameworks is essential for sustainable deployment. Future advancements are expected to focus on neuromorphic memory computing, autonomous cognitive ecosystems, self-learning digital agents, and fully adaptive intelligent systems.

The research concludes that Generative AI Memory Architectures for Long-Term Learning will become a foundational technology for future intelligent systems by enabling continuous adaptation, contextual intelligence, and human-like cognitive learning capabilities.

Keywords: Generative AI Memory, Long-Term Learning, Artificial Intelligence, Cognitive Computing, Neural Networks, Deep Learning, Adaptive Intelligence, Machine Learning, Intelligent Systems, Contextual Learning

AI-Based Dynamic Knowledge Systems for Future Computing

Dr. Rajeshwari Devi¹, Siddharth Jain²

¹Knowledge Engineering Professor, SRM University, India

²AI Knowledge Analyst, SAP Labs India

Abstract: AI-Based Dynamic Knowledge Systems are emerging as an advanced intelligent computing framework for enabling adaptive learning, autonomous knowledge management, and real-time decision support in future digital environments. Traditional knowledge systems generally rely on static databases and manually updated information repositories, limiting their ability to adapt to continuously changing data and complex computational requirements. Dynamic knowledge systems integrate artificial intelligence, machine learning, cognitive computing, generative AI, and semantic reasoning technologies to create intelligent systems capable of autonomous knowledge acquisition, contextual understanding, and continuous learning. This research paper explores the development and applications of AI-Based Dynamic Knowledge Systems for Future Computing across modern intelligent infrastructures.

The study focuses on how intelligent knowledge systems process structured and unstructured data, analyze contextual information, generate insights, and optimize knowledge representation dynamically. Advanced technologies such as neural networks, natural language processing, reinforcement learning, multimodal AI, and knowledge graphs enable these systems to perform intelligent reasoning and adaptive knowledge evolution in real time. AI-driven dynamic knowledge systems can autonomously update information, identify hidden relationships, improve predictive analytics, and support complex decision-making processes. Integration with cloud computing, edge AI, Internet of Things (IoT), and distributed intelligence frameworks further enhances scalability, computational efficiency, and real-time responsiveness.

Applications of dynamic knowledge systems are rapidly expanding in healthcare, education, enterprise automation, cybersecurity, smart governance, scientific research, and intelligent virtual assistants. In healthcare, AI knowledge systems support medical diagnosis, personalized treatment recommendations, and predictive healthcare analytics. Educational platforms use adaptive knowledge frameworks to provide personalized learning experiences and intelligent tutoring systems. Enterprise systems utilize dynamic knowledge management for workflow optimization, business intelligence, and autonomous operational management. Cybersecurity infrastructures also benefit from intelligent threat analysis and adaptive security knowledge systems.

Despite its advantages, implementing AI-based dynamic knowledge systems presents several challenges including data privacy concerns, computational complexity, semantic interoperability issues, ethical considerations, and knowledge bias. Ensuring explainable, secure, and trustworthy AI knowledge frameworks is essential for sustainable deployment in future computing environments. Future advancements are expected to focus on autonomous cognitive ecosystems, self-evolving knowledge architectures, neuromorphic intelligence, and collaborative human-AI reasoning systems.

The research concludes that AI-Based Dynamic Knowledge Systems for Future Computing will become a foundational technology for future intelligent ecosystems by enabling adaptive knowledge evolution, autonomous reasoning, and highly efficient smart computing capabilities.

Keywords: Dynamic Knowledge Systems, Artificial Intelligence, Cognitive Computing, Machine Learning, Knowledge Engineering, Natural Language Processing, Intelligent Systems, Adaptive Learning, Generative AI, Future Computing

Autonomous Multimodal Intelligence for Smart Ecosystems

Dr. Vinod Krishnan¹, Pavithra Nair²

¹Smart Ecosystem Researcher, IIT Guwahati, India

²Multimodal AI Developer, Reliance Jio Platforms, India

Abstract: Autonomous Multimodal Intelligence is emerging as a transformative technology for enabling adaptive, context-aware, and intelligent operations across future smart ecosystems. Traditional intelligent systems generally process only a single type of data such as text, images, or sensor information, limiting their ability to fully understand complex real-world environments. Autonomous multimodal intelligence integrates artificial intelligence, machine learning, computer vision, natural language processing, speech recognition, and cognitive computing to create systems capable of simultaneously analyzing and interpreting multiple data modalities. This research paper explores the development and applications of Autonomous Multimodal Intelligence for Smart Ecosystems across modern digital infrastructures.

The study focuses on how multimodal AI systems process and combine text, audio, video, images, environmental sensor data, and contextual information to support intelligent automation and autonomous decision-making. Advanced technologies such as deep learning, transformer architectures, generative AI, reinforcement learning, and neural attention mechanisms enhance multimodal understanding and adaptive reasoning capabilities. Autonomous multimodal systems can continuously learn from interactions, optimize operational efficiency, and improve real-time responsiveness across dynamic environments. Integration with cloud computing, edge AI, Internet of Things (IoT), and distributed intelligence frameworks further improves scalability, computational performance, and autonomous functionality.

Applications of autonomous multimodal intelligence are rapidly expanding in healthcare, smart cities, industrial automation, intelligent transportation, cybersecurity, education, and smart home ecosystems. In healthcare, multimodal AI systems combine medical imaging, voice analysis, patient records, and sensor data for accurate diagnosis and predictive healthcare analytics. Smart city infrastructures utilize multimodal intelligence for traffic optimization, environmental monitoring, and intelligent public services. Industrial systems benefit from predictive maintenance, robotic coordination, and workflow optimization through adaptive AI-driven automation. Intelligent virtual assistants and smart devices also improve user experiences through contextual understanding and personalized interaction capabilities.

Despite its advantages, implementing autonomous multimodal intelligence systems presents several challenges including computational complexity, interoperability issues, privacy concerns, data security risks, and ethical considerations. Ensuring explainable, secure, and energy-efficient AI architectures is essential for sustainable deployment in future smart ecosystems. Future advancements are expected to focus on self-learning cognitive systems, autonomous AI collaboration, intelligent digital twins, and fully adaptive multimodal computing environments.

The research concludes that Autonomous Multimodal Intelligence for Smart Ecosystems will become a foundational technology for future intelligent infrastructures by enabling adaptive automation, contextual awareness, and autonomous interaction across interconnected digital environments.

Keywords: Autonomous Multimodal Intelligence, Artificial Intelligence, Smart Ecosystems, Machine Learning, Computer Vision, Natural Language Processing, Cognitive Computing, Intelligent Automation, Deep Learning, Internet of Things